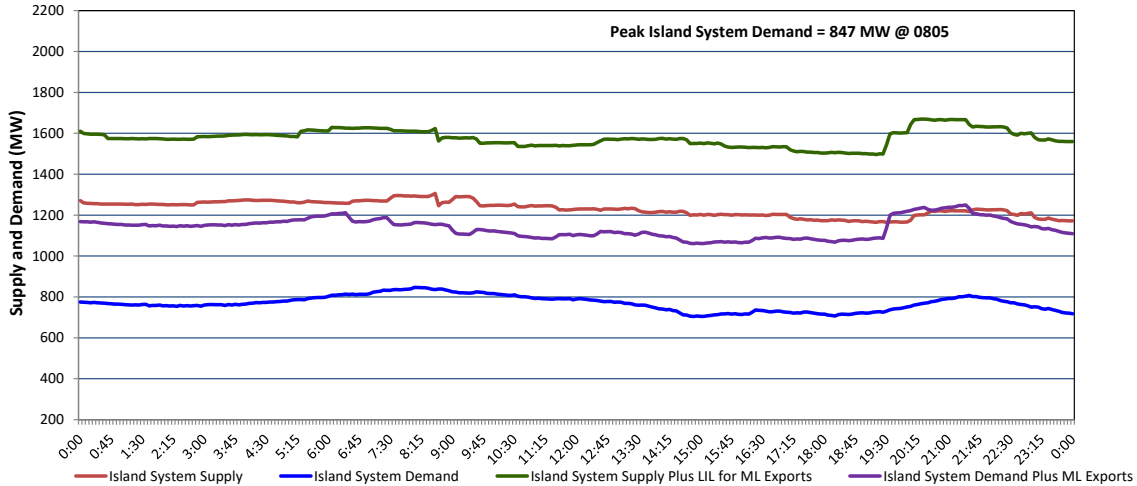


Newfoundland Labrador Hydro (NLH) Supply and Demand Status Report Filed Monday, May 25, 2026

Section 1 Island Interconnected System - Supply, Demand & Exports Actual 24 Hour System Performance For Sunday, May 24, 2026



Island Supply Notes For May 24, 2026

- A As of 1326 hours, February 05, 2026, Cat Arm Unit 2 available at 57 MW due to forced derating (67 MW).
- B As of 0800 hours, March 29, 2026, Holyrood Unit 3 unavailable due to planned outage (150 MW).
- C As of 1513 hours, April 16, 2026, St. Anthony Diesel Plant available at 7.7 MW due to forced derating (9.7 MW).
- D As of 1857 hours, April 17, 2026, Stephenville Gas Turbine available at 25 MW due to forced derating (50 MW).
- E As of 0800 hours, May 06, 2026, Holyrood Unit 2 unavailable due to planned outage 40 MW (170 MW).
- F As of 1052 hours, May 06, 2026, Bay d'Espoir Unit 1 unavailable due to planned outage (76.5 MW).
- G As of 1052 hours, May 06, 2026, Bay d'Espoir Unit 2 unavailable due to planned outage (76.5 MW).
- H At 0701 hours, May 24, 2026, Holyrood Unit 1 unavailable due to planned outage 166 MW (170 MW).
- I At 0841 hours, May 24, 2026, Hinds Lake Unit unavailable due to planned outage (75 MW).

Section 2 Island Interconnected System - Supply, Demand & Outlook

Mon, May 25, 2026	Island System Outlook ²	Seven-Day Forecast	Island System Daily Peak Demand (MW)	
			Forecast ⁸	Adjusted ⁶
Island System Supply: ⁴	1,445 MW	Monday, May 25, 2026	950	900
NLH Island Generation: ^{3,7}	940 MW	Tuesday, May 26, 2026	1,025	975
NLH Island Power Purchases: ⁵	110 MW	Wednesday, May 27, 2026	1,090	1,040
NP and CBPP Owned Generation:	195 MW	Thursday, May 28, 2026	1,110	1,060
LIL/ML Net Imports to Island: ⁹	200 MW	Friday, May 29, 2026	1,065	1,015
		Saturday, May 30, 2026	1,005	955
7-Day Island Peak Demand Forecast:	1,110 MW	Sunday, May 31, 2026	985	935

Island Supply Notes For May 25, 2026

- Notes:
1. Generation outages for running and corrective maintenance are included. These are not unusual for power system operations. They generally do not impact customer supply. Hydro schedules outages to system equipment whenever possible to coincide with periods when customer demands are low and sufficient supply reserves are available. However, from time to time equipment outages are necessary and reserves may be impacted.
 2. As of 0800 Hours.
 3. Gross continuous unit output.
 4. Gross output from all Island sources (including Note 3).
 5. NLH Island Power Purchases include: ML Imports, Exploits Generation, Rattle Brook, Star Lake, Wind Generation and capacity assistance (when applicable).
 6. Adjusted for interruptible load and the impact of voltage reduction when applicable.
 7. Due to limitations inherent in the design of combustion turbines, the output of combustion turbines may be reduced in the event that ambient temperatures exceed the threshold required for full rated output. This threshold is dependent on the design of each turbine.
 8. Does not include ML Exports.
 9. LIL Import sunk in the Island System. Actual LIL flows will be restricted by various system conditions including, but not limited to, Island Load, ML Exports and Avalon Unit status.

Section 3 Island Peak Demand and Exports Information Previous Day Actual Peak and Current Day Forecast Peak

Sun, May 24, 2026	Island Peak Demand ¹⁰	8:05	847 MW
	Exports at Peak		317 MW
	LIL Net Imports to Island		0 MWh
Mon, May 25, 2026	Forecast Island Peak Demand		950 MW

- Notes:
10. Island Demand is supplied by NLH generation and purchases, LIL Imports plus generation owned and operated by Newfoundland Power and Corner Brook Pulp & Paper (Deer Lake Power, DLP).